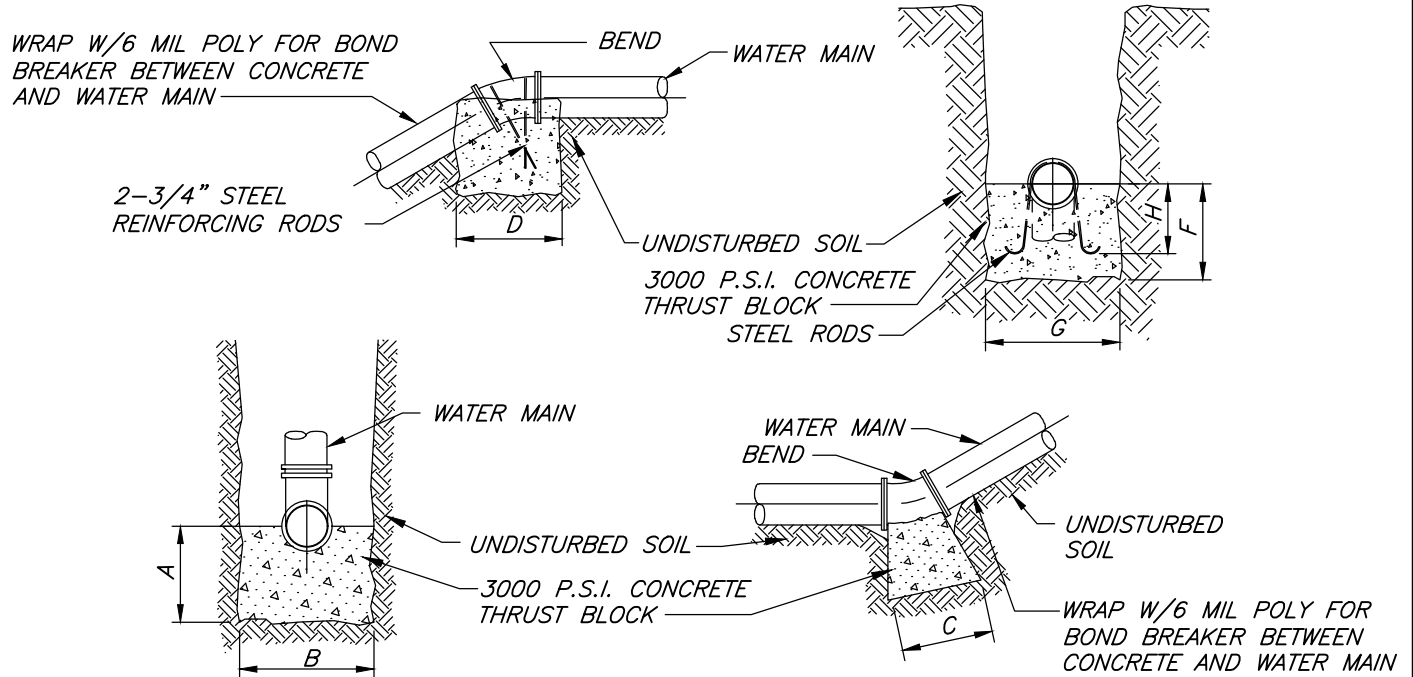


BEND	Min. Volume of Concrete For Block dimensions D,E,F,G	MINIMUM ALLOWABLE DIMENSION FOR VERTICAL THRUST BLOCKS (IN FEET)							
		A	B	C	D	E	F	G	ROD LENGTH H
6" 11 1/4°	.2 Cu. Yd.	1.0	2.5	1.0	2.0	0.5	1.0	2.0	0.5
22 1/2°	.4 Cu. Yd.	1.0	2.5	1.5	2.0	1.0	2.0	2.0	1.5
45°	.8 Cu. Yd.	1.5	2.5	1.5	2.5	1.5	2.0	2.5	1.5
90°	1.5 Cu. Yd.	1.5	2.5	2.0	4.0	1.5	2.0	3.0	1.5
8" 11 1/4°	.35 Cu. Yd.	1.0	2.5	1.5	2.0	1.0	1.5	2.0	1.0
22 1/2°	.7 Cu. Yd.	1.5	2.5	1.5	2.5	1.0	2.0	2.5	1.5
45°	1.4 Cu. Yd.	1.5	2.5	2.0	4.0	1.5	2.0	3.0	1.5
90°	2.6 Cu. Yd.	2.0	2.5	2.0	4.0	2.0	3.0	3.5	2.5
12" 11 1/4°	.8 Cu. Yd.	1.5	3.0	1.5	2.5	1.5	2.0	2.5	1.5
22 1/2°	1.6 Cu. Yd.	1.5	3.0	2.0	4.0	2.0	2.0	3.0	1.5
45°	3.2 Cu. Yd.	2.0	3.0	2.0	5.0	2.0	3.0	3.5	2.5
90°	6.0 Cu. Yd.	2.0	3.0	2.5	5.5	2.5	3.5	3.5	3.0
16" 11 1/4°	2.6 Cu. Yd.	2.0	3.5	4.5	4.1	1.0	2.5	2.0	3.0
22 1/2°	6.8 Cu. Yd.	2.5	3.5	4.5	5.7	1.0	3.5	2.5	4.0
45°	10.0 Cu. Yd.	3.5	3.5	6.0	7.8	1.5	3.5	3.0	4.0
90°	12.0 Cu. Yd.	3.0	3.5	6.0	8.0	2.0	3.5	3.5	4.0

NOTE: THE DEVELOPER MAY ELECT TO USE REINFORCING RODS AS OPPOSED TO CONCRETE THRUST BLOCKS FOR VERTICAL BENDS. ALL THRUST RESTRAINT BY ROD SHALL BE APPROVED BY THE WATER SYSTEM OPERATOR PRIOR TO INSTALLATION.



VERTICAL THRUST BLOCK

N.T.S.

NOTES:

- 1) NO CONCRETE TO ENCOMPASS ANY BOLTS OR BELL ENDS WHERE POSSIBLE.
- 2) DIP FITTINGS SHALL BE WRAPPED WITH 6 MIL. THICK POLYETHYLENE, 2 FEET BEYOND FITTING ON PVC PIPE.
- 3) PIPE RESTRAINER SHALL BE USED AT ALL FITTING TO PVC, CI & DIP PIPE CONNECTIONS.
- 4) REFER TO MATERIAL LIST, W-03.

ISSUE DATE: JUNE 2015		TOWN OF BATAVIA
		WATER DETAILS
REVISIONS	DATE	COMMENTS
	06/2021	REMOVED CONCRETE ABOVE PIPE
		VERTICAL THRUST BLOCK DETAIL
		DRAWING W-09