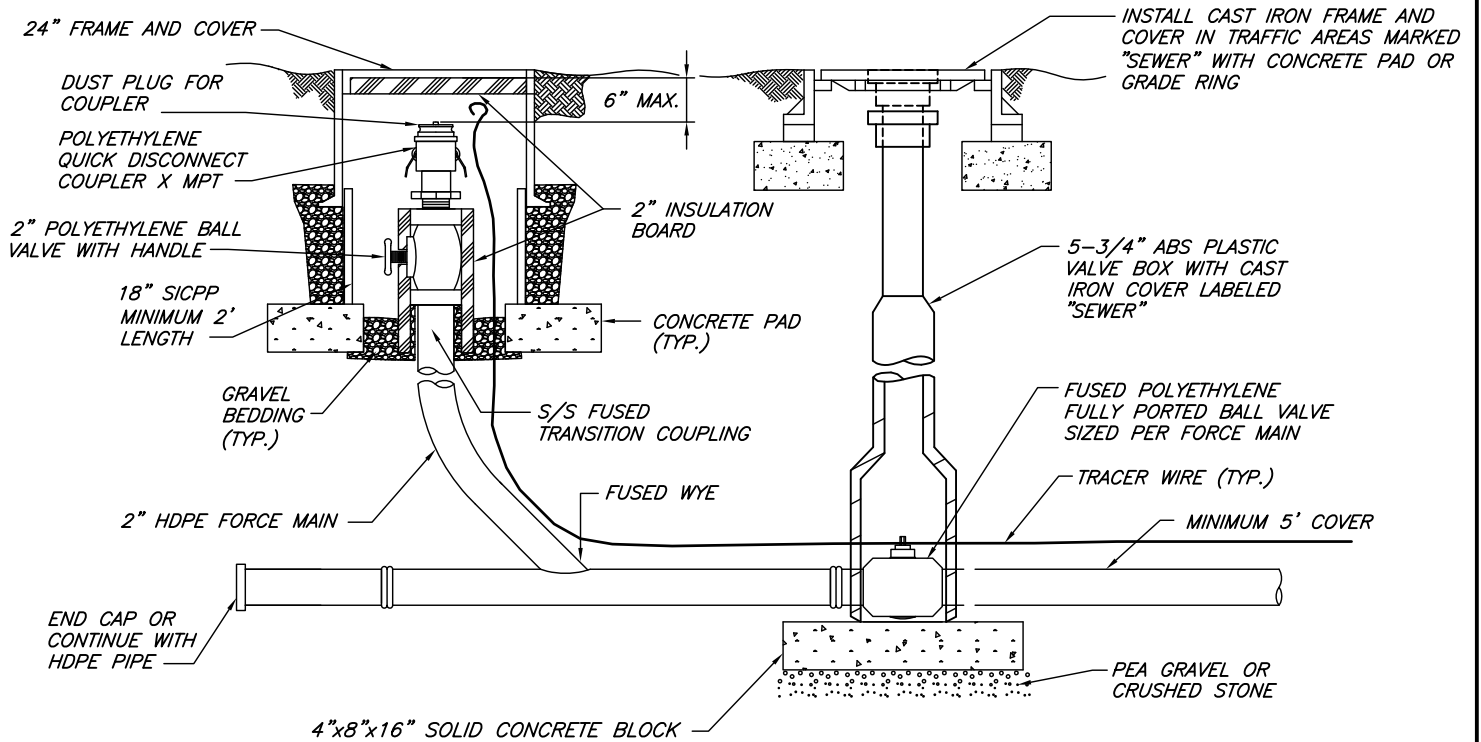


**PLAN VIEW**



**PROFILE**

- NOTES:  
 1. NO BRASS OR IRON ALLOWED.  
 2. REFER TO MATERIAL LIST, S-03.

**TYPICAL 2" FLUSHING CONNECTION**

N.T.S.

ISSUE DATE: OCTOBER 2018		TOWN OF BATAVIA
		SANITARY SEWER DETAILS
REVISIONS	DATE	COMMENTS
		<b>2" FLUSHING CONNECTION FOR SEWER FORCE MAIN</b>
		DRAWING S-21