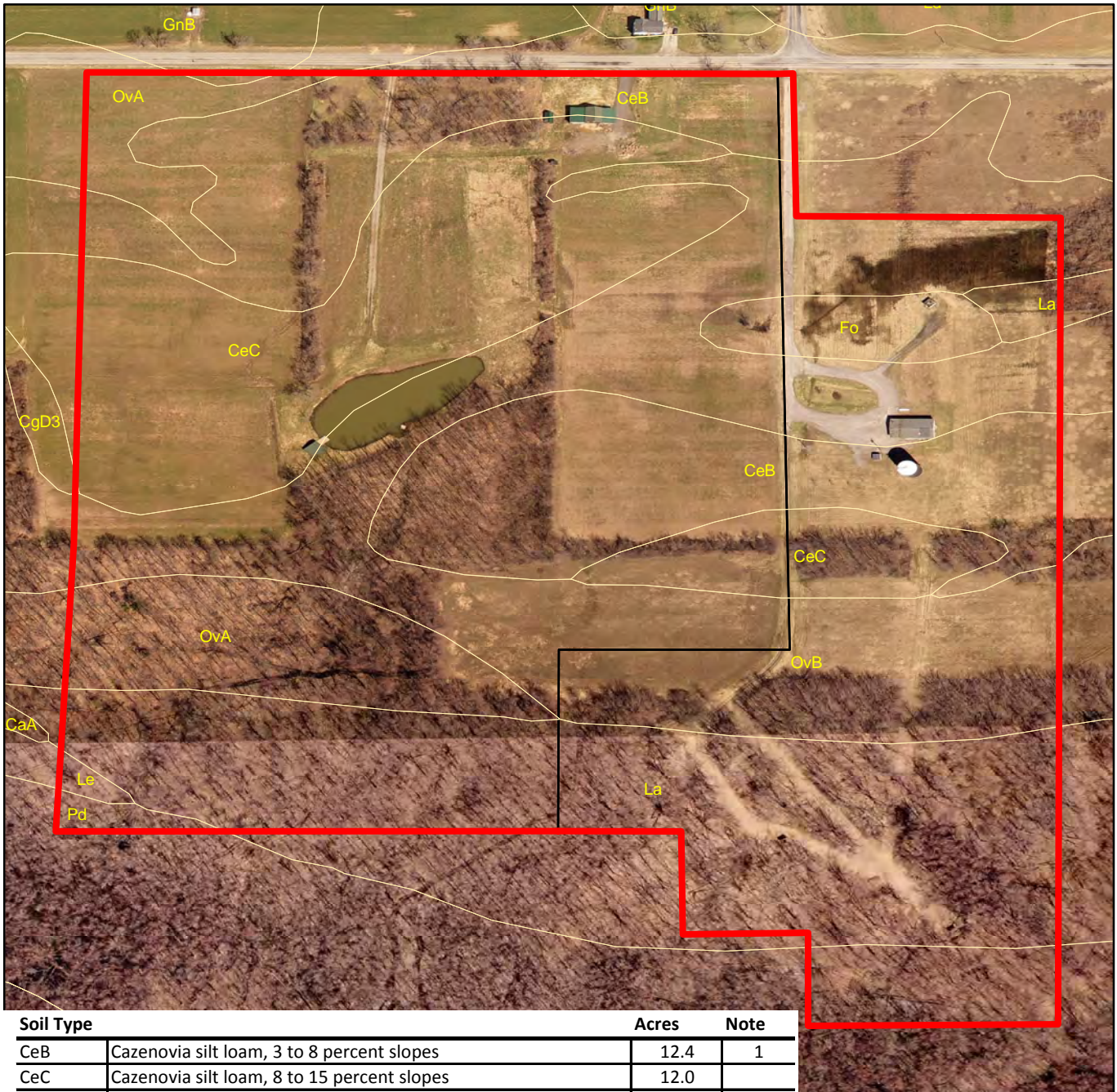


# Soils



Soil Type		Acres	Note
CeB	Cazenovia silt loam, 3 to 8 percent slopes	12.4	1
CeC	Cazenovia silt loam, 8 to 15 percent slopes	12.0	
CgD3	Cazenovia silty clay loam, 15 to 25 percent slopes, eroded	0.0	
Fo	Fonda mucky silt loam	1.4	3
GnB	Galen very fine sandy loam, 2 to 6 percent slopes	0.1	1
La	Lakemont silty clay loam	12.4	
Le	Lamson mucky very fine sandy loam	0.2	3
OvA	Ovid silt loam, 0 to 3 percent slopes	5.1	2
OvB	Ovid silt loam, 3 to 8 percent slopes	17.1	2
Pd		1.9	3
<b>Total:</b>		<b>62.5</b>	

**Notes:**

- 1 Prime Farmland
- 2 Prime Farmland if drained
- 3 Muck

