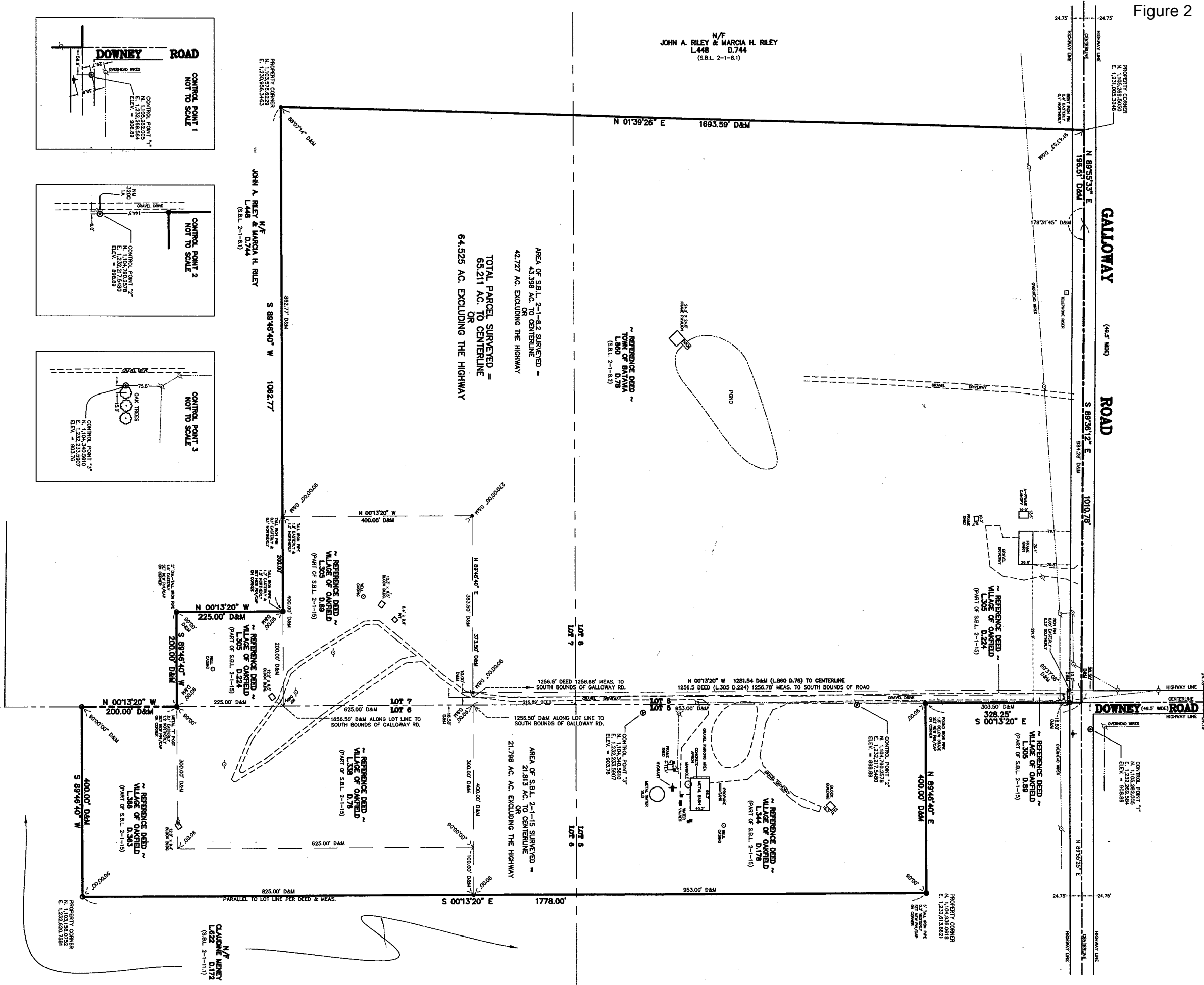
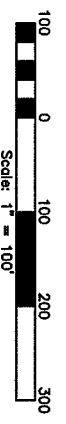


Figure 2



MAP OF A SURVEY
 OF LANDS BELONGING TO & TO BE ACQUIRED BY
TOWN OF BATAVIA
 BEING PART OF LOTS 5, 6, 7, & 8
 IN TOWNSHIP 12, RANGE 2 OF THE TONAWANDA RESERVATION
 SITUATE IN THE
TOWN OF BATAVIA
GENESEE COUNTY, NEW YORK
 OCTOBER 6, 2008
 REVISED: OCTOBER 23, 2008 (CONTROL POINTS ADDED)



- LEGEND**
- ⊙ = HORIZONTAL & VERTICAL CONTROL POINT
 - = PIN/CP - MARKED - "KODONOGHUE LS 49514"
 - ⊙ = IRON PIN SET
 - ⊙ = IRON PIN OR PIPE FOUND
 - ⊙ = WATER VALVE
 - ⊙ = FIRE HYDRANT
 - ⊙ = UTILITY POLE
 - ⊙ = TELEPHONE RISER

SURVEY NOTES

- 1) THE PERIMETER SURVEY AND ITS TIES TO GEODETIC CONTROL MONUMENTS WERE COMPUTED FROM THE NOTES OF AN INSTRUMENT SURVEY PERFORMED WITH THE PRECISION NECESSARY TO ACHIEVE AN ACCURACY OF 1 IN 10,000 OR BETTER.
- 2) DISTANCES SHOWN ARE HORIZONTAL GROUND LENGTHS.
- 3) COORDINATE OF CONTROL POINT 1 IS BASED ON CONTROL POINT "A" 0.99990213.
- 4) CONTROL POINT "A" WAS ESTABLISHED FROM ANS MONUMENT.
- 5) ELEVATION LISTING (3) LI BAND GPS RECEIVERS AND WAS COMPUTED USING THE geoid model.
- 6) ALL OTHER COORDINATES SHOWN ARE GROUND.
- 7) DATUM USED (NAVD 88, MAD 83).



I HEREBY CERTIFY THAT THIS MAP WAS MADE OCTOBER 6, 2008 FROM NOTES OF A SURVEY CONDUCTED SEPTEMBER 23, 2008.
 KEVIN M. O'DONOGHUE, L.S. No. 49514

NOTES:
 1) I HEREBY CERTIFY THAT THIS MAP WAS MADE OCTOBER 6, 2008 FROM NOTES OF A SURVEY CONDUCTED SEPTEMBER 23, 2008.
 KEVIN M. O'DONOGHUE, L.S. No. 49514

WELCH & O'DONOGHUE
 LAND SURVEYORS, P.C.
 P.O. BOX 603
 STAFFORD, NEW YORK 14445
 PH: (789) 345-3334
 FAX: 345-3910

JOB No. 008-34093