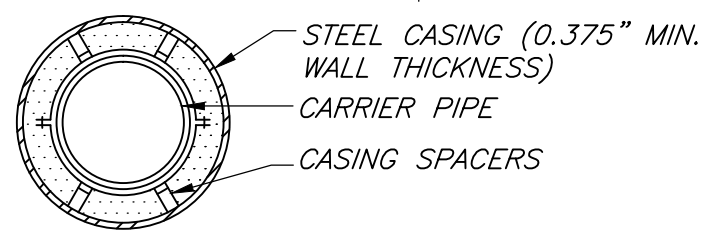


NOTES:

- 1) FILL VOID WITH NYSDOT ITEM #204.02 CONTROLLED LOW STRENGTH MATERIAL (COMPRESSIVE STRENGTH: 50-100 PSI)



TYPICAL CASING PIPE DETAIL

N.T.S.

MARCH 2010

REVISIONS		TOWN OF BATAVIA
DATE	COMMENTS	WATER DETAILS
		TYPICAL CASING PIPE DETAIL
		DRAWING W-15