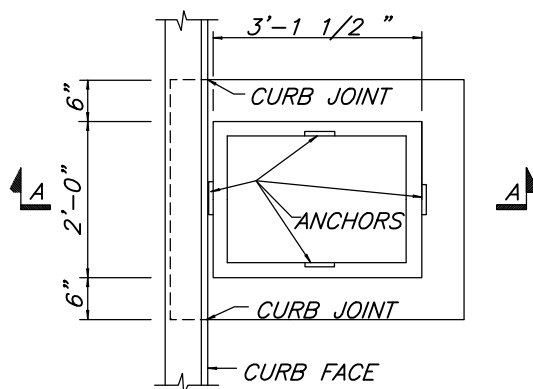
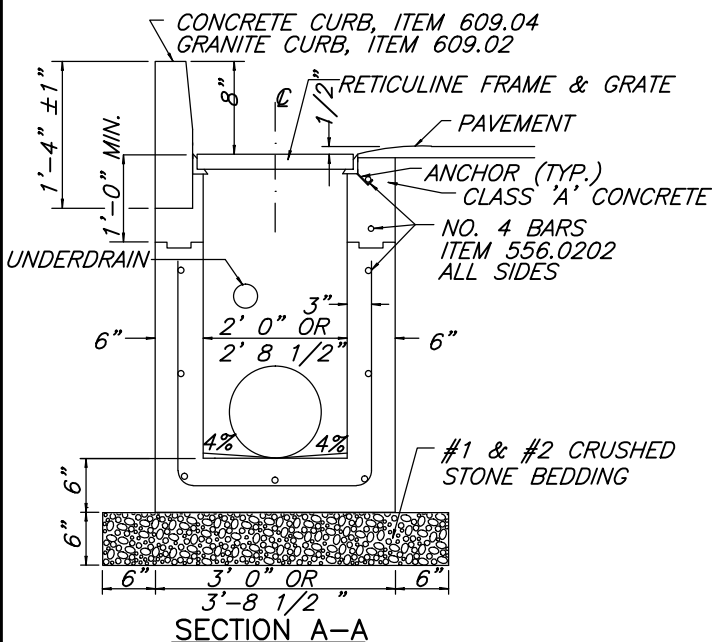


PLAN FOR PIPE DIA. LESS THAN 18"



PLAN FOR PIPE DIA. GREATER THAN 18" UP TO 24" PIPE



NOTES:

1. ITEM 655.02 FRAME & GRATE—FRAME 2'-4 15/16" X 3'-1 1/2" GRATE 2'-3 11/16" X 3'-0 1/2" RETICULINE FRAME & GRATE ASSEMBLY TYPE NO. 11, SEE N.Y.S.D.O.T. STANDARD SHEET 855-3. PAYMENT AREA = 7.2 SQ. FEET.
2. REINFORCEMENT SHALL HAVE A COVER OF 2" UNLESS OTHERWISE SHOWN. THE COST OF ALL BAR REINFORCEMENT SHALL BE INCLUDED IN THE PRICE BID FOR DROP INLETS. ALL BAR REINFORCEMENT IN THE PRE CAST STRUCTURE SHALL BE ACCORDING TO N.Y.S.D.O.T. STANDARD SHEET 604-5.
3. ALL CONCRETE FOR DROP INLETS SHALL BE CLASS "A". BENCHES SHALL BE CAST-IN-PLACE ON ALL STORM DROP INLETS REGARDLESS OF PIPE DIAMETER. COST TO BE INCLUDED IN DROP INLET ITEM.
4. FILL WITH CEMENT MORTAR AND SEAL WITH ASPHALT EMULSION TACK COAT BETWEEN FRAME AND CURB. PAYMENT SHALL BE INCLUDED IN APPROPRIATE CURB ITEM.
5. THE INTERIOR AND EXTERIOR OF ALL DROP INLETS TO BE COATED WITH TWO COATS OF KOPPERS SUPER SERVICE BLACK OR APPROVED EQUAL.
6. ALL PIPE CONNECTIONS TO STRUCTURE SHOULD BE SEALED WITH 100% MORTAR.
7. INTERIOR DIMENSIONS SHALL BE 2'-0" X 2' 8".
8. REFER TO FRAME & GRATE ANCHOR DETAIL.
9. STEPS WILL NOT BE ALLOWED.

STANDARD CATCH BASIN

JULY 2010

N.T.S.

REVISIONS		TOWN OF BATAVIA
DATE	COMMENTS	HIGHWAY & STORM SEWER DETAILS
		<h2 style="margin: 0;">STANDARD CATCH BASIN</h2>